

**DEMOCRATIC BALLOT FOR JACKSON COUNTY, NORTH CAROLINA**

Democratic Ballot  
Jackson County, North Carolina  
November 8, 2022

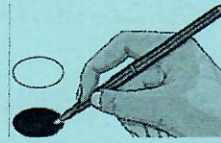
Paid for by the Jackson County, NC  
Democratic Party

**B0005**

**Board of Commissioners  
District 2**  
(You may vote for one)

**Ballot Marking Instructions:**

A. With the marking device provided or a black ball point pen, completely fill in the oval to the left of each candidate of selection of your choice as shown.  
B. Where authorized, you may write in a candidate by filling in the oval and writing the name on the Write-in-line.  
If you tear, deface or wrongly mark this ballot, return it to request a replacement.



- Boyce T. Deitz**  
Democratic Party
- John W. Smith**  
Republican Party

FEDERAL OFFICES		DISTRICT OFFICES	
<p align="center"><b>US Senate</b> (You may vote for one)</p>		<p align="center"><b>NC Court of Appeals Judge Seat 9</b> (You may vote for one)</p>	
<ul style="list-style-type: none"> <li><input type="radio"/> <b>Matthew Hoh</b> Green Party</li> <li><input checked="" type="radio"/> <b>Cheri Beasley</b> Democratic Party</li> <li><input type="radio"/> <b>Shannon W. Bray</b> Libertarian Party</li> <li><input type="radio"/> <b>Ted Budd</b> Republican Party</li> <li><input type="radio"/> _____ Write-in</li> </ul>		<ul style="list-style-type: none"> <li><input checked="" type="radio"/> <b>Brad A. Salmon</b> Democratic Party</li> <li><input type="radio"/> <b>Donna Stroud</b> Republican Party</li> </ul>	
<p align="center"><b>US House of Representatives District 11</b> (You may vote for one)</p>		<p align="center"><b>NC Court of Appeals Judge Seat 10</b> (You may vote for one)</p>	
<ul style="list-style-type: none"> <li><input type="radio"/> <b>David Adam Coatney</b> Libertarian Party</li> <li><input type="radio"/> <b>Chuck Edwards</b> Republican Party</li> <li><input checked="" type="radio"/> <b>Jasmine Beach-Ferrara</b> Democratic Party</li> </ul>		<ul style="list-style-type: none"> <li><input type="radio"/> <b>John M. Tyson</b> Republican Party</li> <li><input checked="" type="radio"/> <b>Gale Murray Adams</b> Democratic Party</li> </ul>	
<p align="center"><b>State Offices</b></p>		<p align="center"><b>NC District Court Judge District 30 – Seat 1</b> (You may vote for one)</p>	
<p align="center"><b>NC Supreme Court Associate Justice – Seat 3</b> (You may vote for one)</p>		<p align="center"><b>NC District Court Judge District 30 – Seat 2</b> (You may vote for one)</p>	
<ul style="list-style-type: none"> <li><input type="radio"/> <b>Richard Deitz</b> Republican Party</li> <li><input checked="" type="radio"/> <b>Lucy Inman</b> Democratic Party</li> </ul>		<ul style="list-style-type: none"> <li><input type="radio"/> <b>Donna Forga</b> Republican Party</li> <li><input type="radio"/> <b>Kristina Lynn Earwood</b> Republican Party</li> </ul>	
<p align="center"><b>NC Supreme Court Associate Justice – Seat 5</b> (You may vote for one)</p>		<p align="center"><b>NC District Court Judge District 30 – Seat 3</b> (You may vote for one)</p>	
<ul style="list-style-type: none"> <li><input checked="" type="radio"/> <b>Sam J. Ervin IV</b> Democratic Party</li> <li><input type="radio"/> <b>Trey Allen</b> Republican Party</li> </ul>		<ul style="list-style-type: none"> <li><input checked="" type="radio"/> <b>Roy Wijewickrama</b> Democratic Party</li> </ul>	
<p align="center"><b>NC Court of Appeals Seat 8</b> (You may vote for one)</p>		<p align="center"><b>District Attorney District 43</b> (You may vote for one)</p>	
<ul style="list-style-type: none"> <li><input type="radio"/> <b>Julie Tate Flood</b> Republican Party</li> <li><input checked="" type="radio"/> <b>Carolyn Jennings Thompson</b> Democratic Party</li> </ul>		<ul style="list-style-type: none"> <li><input type="radio"/> <b>Ashley Hornsby Welch</b> Republican Party</li> </ul>	
		<p align="center"><b>County Offices</b></p>	
		<p align="center"><b>Board of Commissioners Chairman</b> (You may vote for one)</p>	
		<ul style="list-style-type: none"> <li><input type="radio"/> <b>Mark Letson</b> Republican Party</li> <li><input checked="" type="radio"/> <b>Brian McMahan</b> Democratic Party</li> </ul>	
		<p align="center"><b>Board of Commissioners District 1</b> (You may vote for one)</p>	
		<ul style="list-style-type: none"> <li><input checked="" type="radio"/> <b>Gayle Woody</b> Democratic Party</li> <li><input type="radio"/> <b>Todd Bryson</b> Republican Party</li> </ul>	
		<p align="center"><b>NONPARTISAN OFFICES</b></p>	
		<p align="center"><b>Soil and Water Conservation District Supervisor</b> (You may vote for 2)</p>	
		<ul style="list-style-type: none"> <li><input type="radio"/> <b>Doug Parker</b></li> <li><input type="radio"/> <b>John Wittekind</b></li> <li><input type="radio"/> _____ Write-in</li> <li><input type="radio"/> _____ Write-in</li> </ul>	
		<p align="center"><b>End of Ballot</b></p>	